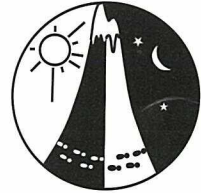


The Just a Bit of Parrotbush Rogaine

WARA Spring 12 Hour, 19 October 2002



Paddy Pallin Schools Championships

LEGEND

SCALE 1:50,000, 5 metre contour interval



- Building
- Continuations
- Control 72
- Contours
- Dam
- Fence
- Rock Surface
- Hash House
- Magnetic North Line
- Out of Bounds
- Road, Sealed
- Road, Major Gravel
- Track
- Watercourse
- Water Drop W

SETTERS Dave Currell
Toivo Pedaste

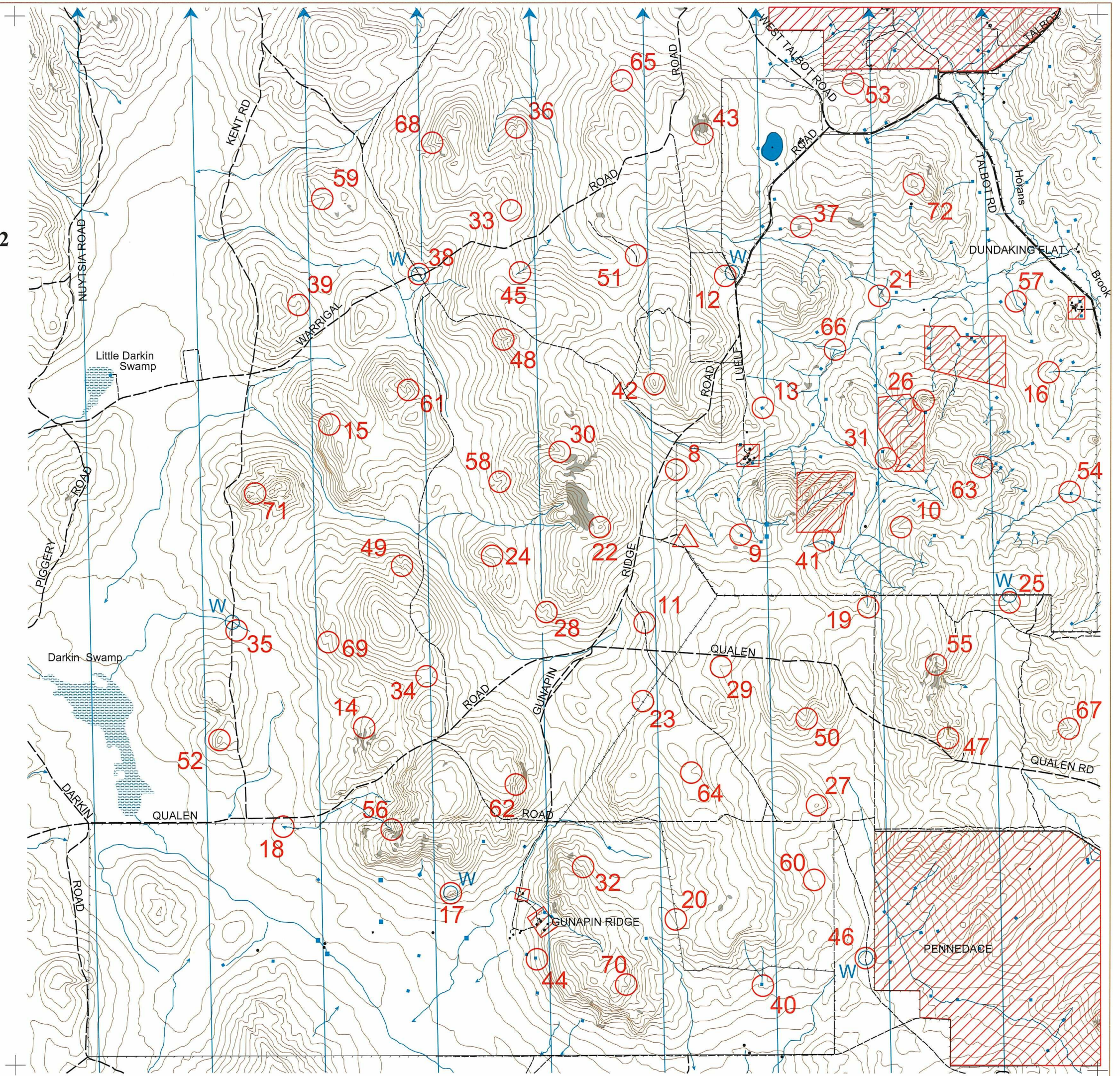
VETTERS Vince Harding
Jeff Conrads



THANKS TO THE FARMERS
Denis & J Luelf
Max Edwards
Rick Peploe

Paddy Pallin

Data supplied by DOLA and used under copy licence 393/93.
Possession of this map does not give right of entry to this area.
Western Australian Rogaining Association Inc.
This map was produced using OCAD.



2002 - The Just a Bit of Parrotbush Rogaine, WARA Spring 12 Hour, 19 October 2002

No.	Description	Points
8	The fence on the spur	20
9	The dam, 20m at 300°	20
10	The spur	20
11	The track bend	20
12	The spur, rocky	20
13	The dam, 30m at 90°	30
14	The rock surface, north edge	30
15	The gully, head of	30
16	The watercourse, head of	30
17	The knoll, rocky	30
18	The watercourse	30
19	The watercourse, end of	30
20	A fence corner	30
21	The watercourse bend	30
22	The Knoll	30
23	The gully, intersection with the power line	30
24	The spur, indistinct	30
25	The gully	40
26	The Knoll	40
27	The Knoll	40
28	The gully, shallow	40
29	The gully, shallow	40
30	The gully, head of	40
31	The spur, rocky	40
32	The spur	40
33	The spur	40
34	The saddle	40
35	A rock surface, 20mx5m, south side	40
36	The gully, head of	40
37	The rock surface, west edge	50
38	The road junction	50
39	A knoll, on the spur	50
40	The dam, SE corner	50
41	The watercourse	50
42	The knoll, rocky	50

No.	Description	Points
43	The gully, head of	60
44	The dam, 50m at 150°	60
45	The watercourse	60
46	The track bend	60
47	The gully, head of	60
48	A watercourse	60
49	The gully, head of	70
50	The spur, rocky	70
51	The indistinct track, bend	70
52	The knoll	70
53	The spur	70
54	The dam, 25m at 300°	70
55	The gully	80
56	The watercourse, head of	80
57	The watercourse	80
58	A watercourse junction	80
59	The gully, shallow	80
60	The gully, shallow, west side of a parrotbush thicket	80
61	A knoll, on the spur	90
62	The spur, rocky	90
63	The southern watercourse, head of	90
64	The gully, shallow, south end of a 30mx30m clearing	90
65	The gully	90
66	The watercourse junction	90
67	The spur	100
68	The spur	100
69	The gully, shallow	100
70	The spur, rocky	100
71	The saddle	100
72	The summit	100

Patrolled Roads
 Warrigal Rd, Kent Rd, Qualen Rd,
 Gunapin Ridge Rd, Luelf Rd

Important Information
Control Cards From 9.30am
Briefing 9.45am
Start 10.00am
Finish Schools: 4.00pm General: 10.00pm
Hash House Saturday: 4.00pm - 11.00pm Sunday: 7.00am - 8.30am
Moonrise 4.42pm
Sunrise
Civil Twilight ends 6.52pm
Nautical Twilight 7.22pm
Astronomical Twilight 7.52pm
Late Penalty 10 points per minute
Number of Controls 65
Total Points 3640